



**dindi.**

Fine Art Photography

Reflecting  
Identities



# The Paradox of inner Nature

## PARADOX

“In fact in every woman another woman exists. An external creature and an internal being. One who lives in the upper world and one that lives in a world that is not so easy to identify. The external creature lives by daylight and can easily be detected. But the internal being usually comes from far to the surface, often suddenly and vanishes equally quickly as it appears.” *Citaat: Clarissa Pinkola Estes*

www.dindi.nl

d.

# dindi.

## reflecting identities

Dindi is a Dutch artist and she lives and works in Gouda, The Netherlands. Through the surreal worlds that dindi creates, the picturesque images evoke confusion, despite of its serene stillness. In her photographic work dindi tries to create an inner landscape. In fact, dindi visualizes the duality of an inner paradox; the veil, the layering and the masks of human identity.

Water is a very important part of her photographic work.

Dindi: “Water continues to fascinate me and in this I keep researching the impact of water in my work. In fact, water is the only element that I cannot fully control. The water allows both the staged image and the surreal water reflections to balance in an interesting and fascinating way. Water brings a certain spontaneity to my work as well as surrealism and alienation from reality, which allows me to visualize those deeper inner layers.

With my images I am taking you along this “inner walk”; wandering through the landscape of your world behind its masks and coverings. The water in my work mirrors the thoughts and the viewer can be taken on a journey through his own illusionary world of desires and fears. “

After finishing my Fine Art Studies at the Willem de Kooning Academy Rotterdam in '99, I continued investigating using water affecting my images. Experimenting with water and trying to control its impact is the main core of my research for over the past 20 years.

Water sometimes tends to abstract forms within the figurative image, thereby giving the images a surreal and oily appearance. These new ‘uncontrollable’ shapes that water causes, free the image and help me to visualize normally invisible complex signals and capture them together in one image.

The desire to merge with the sublime manifests itself in many guises and always contains this paradox. It is precisely within that apparent being torn that completeness already exist. And this seemingly dual contradiction is precisely wherein it resides. It is within the inexplicable, balancing on the edge of insanity, discord and surrender, that in my opinion, lies the unity.



Within these imaginary worlds that I create, I try to capture and depict these perfectly sculpted inner landscapes into an outer form and image. And so a surrealistic biotope arises in which “the cruel and the beautiful” unite.

Nietzsche: “It is not the beauty that we long for but it is the chaos, the primal ground of our existence that reaches beyond understanding and words.”

While intuitively creating the most recent ‘Inner Landscapes’ series I started to delve into cyclical sense of time. During the process, a kind of galactic landscapes arose in which timelessness and multiple actions were repeatedly linked. Synchronous in a kind of cosmic rhythm. The landscape symbolizes the body and the body symbolizes the landscape as a cyclical reflection. The fusion of everything.

The idea that everything is in a way in relation to each other, of which actions, memories, future, past, life, growth and death take place as a cyclical process and at the same time. I try to let all this grow intuitively in one image. The images are therefor a fullness of actions and yet have the tranquility and acceptance of this multiplicity because it is a cyclical flow.

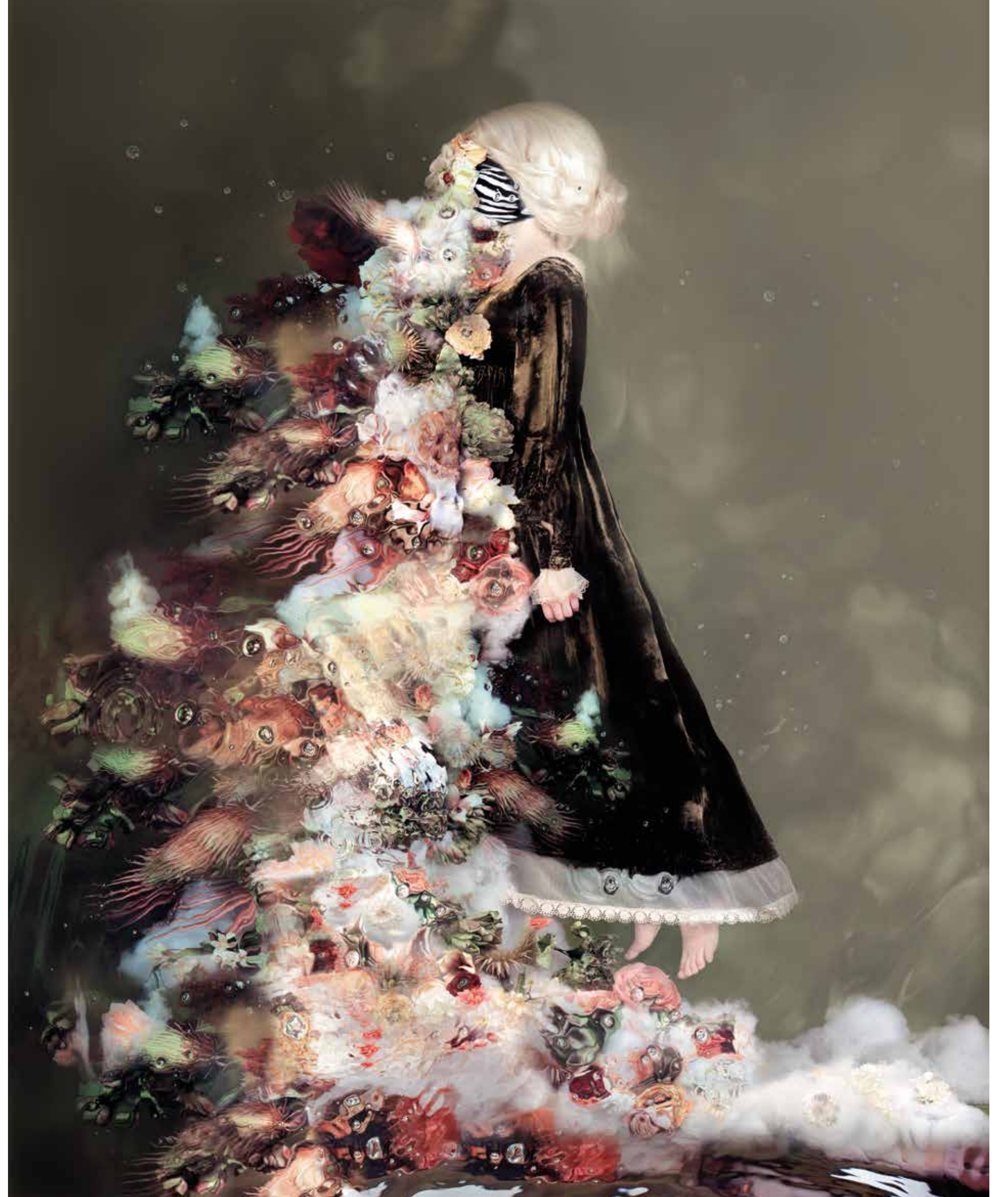


**Lily of the Valley**  
2022

120 x 150 cm  
Other sizes possible

Limited edition of 7 pieces

Fine art Photography





**Mother Gaia**  
2022

110 x 130 cm  
Other sizes possible

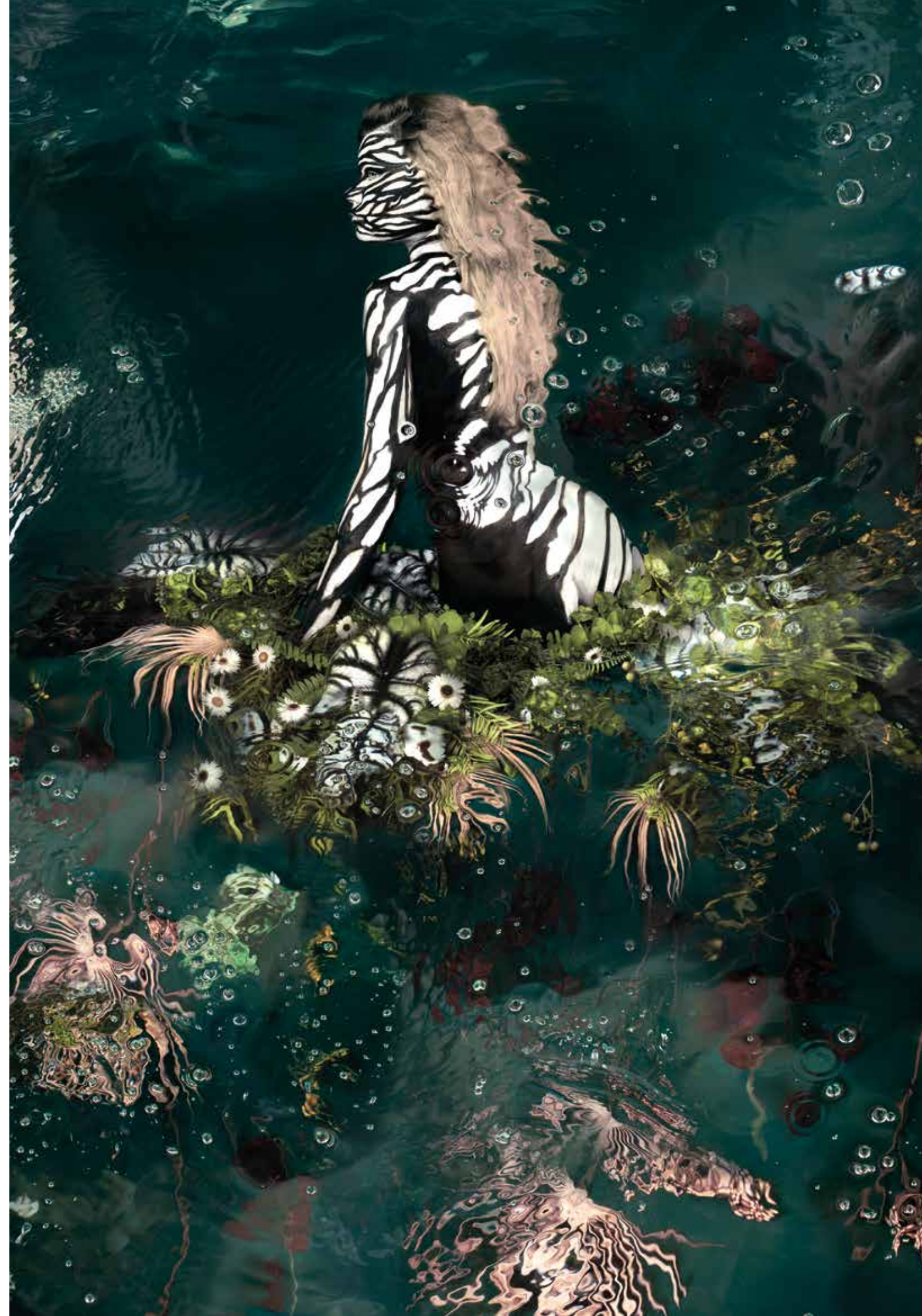
Limited edition of 7 pieces

Fine art Photography





**Leizi**  
2022  
140 x 200 cm  
Other sizes possible  
Limited edition of 7 pieces  
Fine art Photography





**Mama Qocha**  
2022

100 x 100 cm  
Other sizes possible

Limited edition of 7 pieces

Fine art Photography







**Little Green**  
2021

150 x 150 cm  
Other sizes possible

Limited edition of 7 pieces

Fine art Photography





**Ebony**  
2021

150 x 135 cm  
Other sizes possible

Limited edition of 7 pieces

Fine Art Photography



**Infinity**  
2021

115 x 150 cm  
Other sizes possible

Limited edition of 7 pieces

Fine Art Photography







**The Baroness**  
2021

150 x 150 cm  
Other sizes possible

Limited edition of 7 pieces

Fine art Photography





**The Oracle**  
2021

120 x 120 cm  
Other sizes possible

Limited edition of 7 pieces

Fine Art Photography